



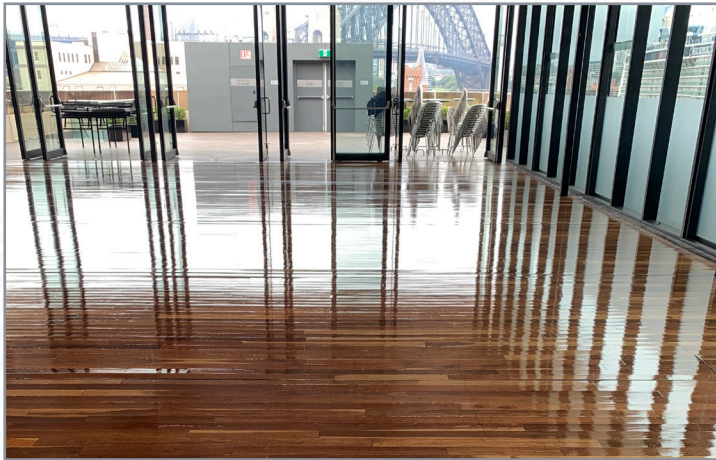
Museum of Contemporary Art Australia

A High Class Finish for a Luxurious Harbourside Room

USE QUALITY, USE URETHANE COATINGS

The NSW Government are proud of their prominent public buildings and the NSW Museum of Contemporary Arts (MCA) is no exception.

Housed in the former Maritime Services building located at Circular Quay on the edge of Sydney Harbour, the NSW government are focused on the importance of maintaining and preserving such a building.

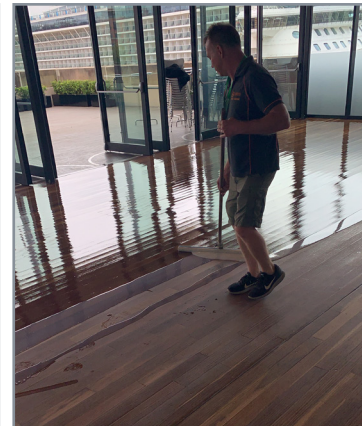


Urethane Coatings, Purathane 2K Satin was specified to finish the Spotted Gum Australian hardwood flooring in the luxurious Harbourside Room. The **Purathane** range of products emit low VOC's (volatile organic compounds) so are both user and environmentally friendly, whilst retaining all the durable and hard wearing benefits of solvent based polyurethane, sealers and traditional polishes.

A durable product with a high class finish was required for this application, maintenance is extremely important to the MCA as they have 1000's of visitors annually many of which are international tourists visiting the iconic Sydney Harbour.

Purathane 2K Satin is a two pack system from **Urethane Coatings, Purathane Water Borne Range**. This two component water borne polyurethane was developed to provide timber and parquet floors with extra hardwearing and long lasting protection.

The rapid curing of the **Purathane Two Pack** achieves optimal hardness up to 50% faster than single pack water borne polyurethane and the higher solids content provides a thicker film which offers greater resistance to wear.



Result:

A hard wearing protective system with an attractive finish.

For more information:

www.urethanecoatings.com.au

+61 2 9666 3788